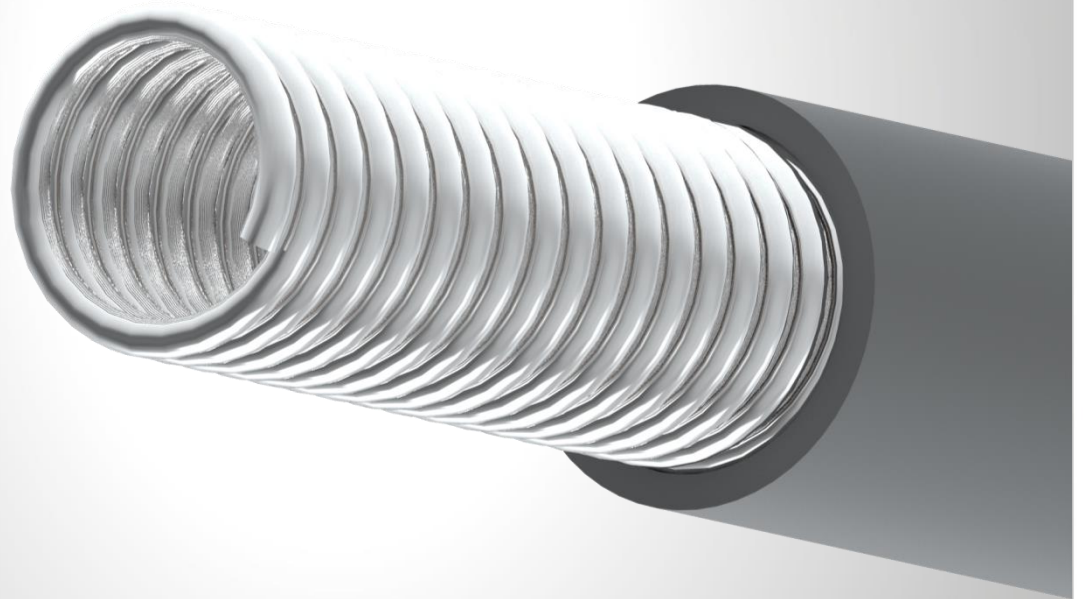




FlexiGlide

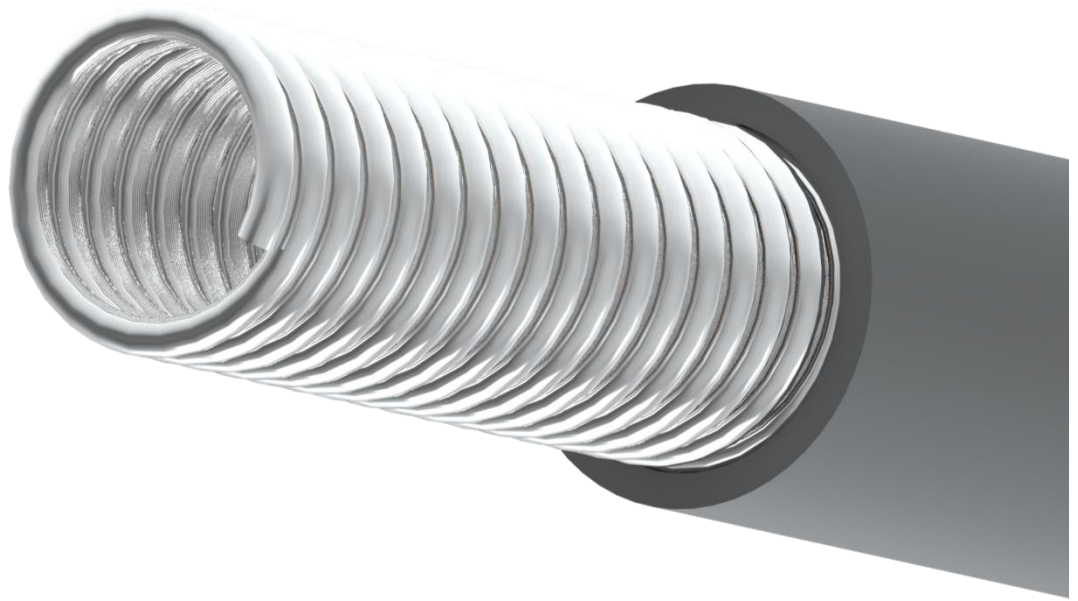
Wire Guidance



FlexiGlide Wire Guidance – Technical Details

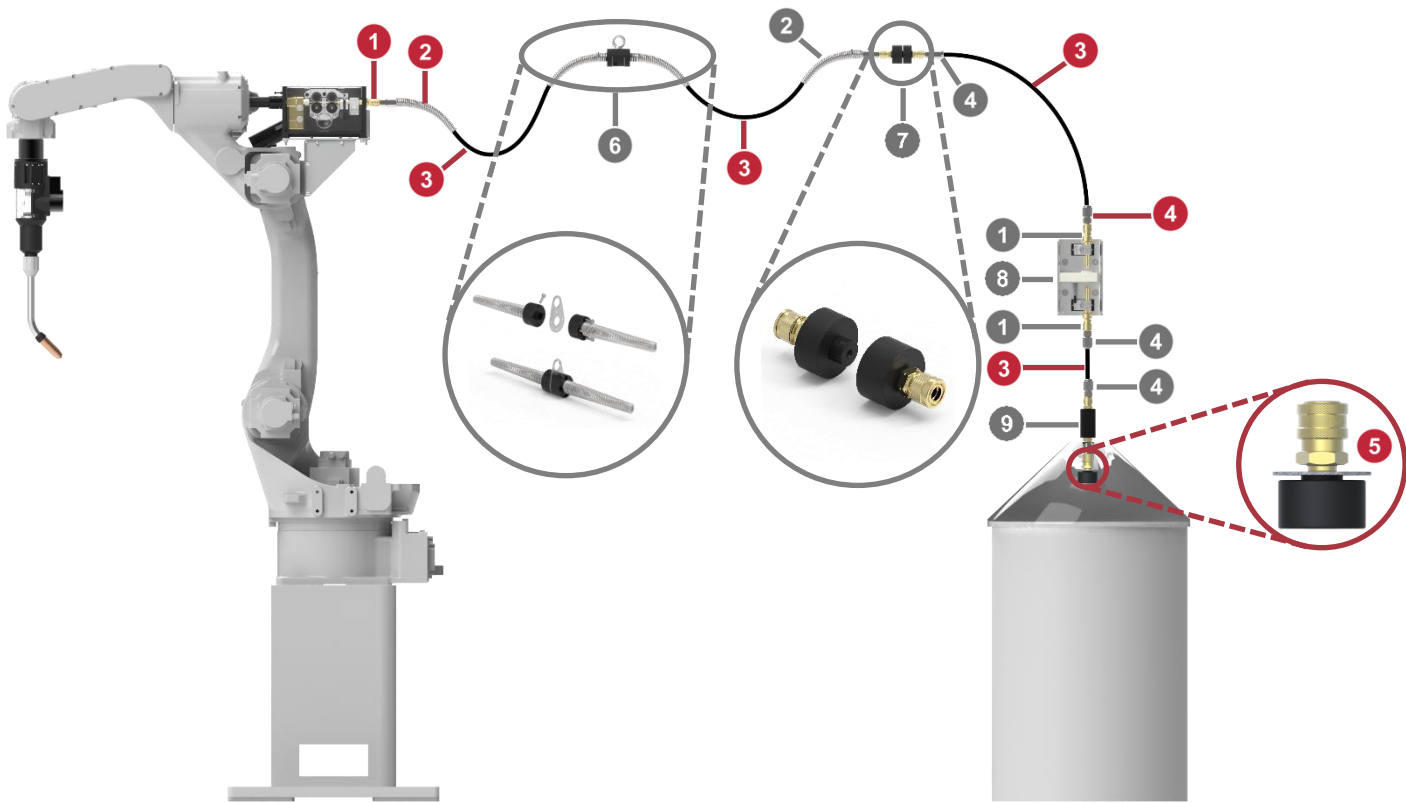
SKS Wire Guidance optional made from high-alloyed Chrome/Nickel spring-steel or galvanized steel with a high flexibility and reduced surface friction. The constructive base, a spiral with a plastic type sheath results in a robust product with a high lifetime.

- Optimised for use in robotic applications
- Extended work life
- Very good sliding property
- Flame retardant and abrasion resistant outer sheath
- Lower wire pull resistance



| Technical Details of FlexiGlide Wire Guidance | | |
|---|--|--|
| Property | Type A | Type B |
| Partnumber | 44-3-2 | 44-3-1 |
| Inner Diameter | 5.9mm | |
| Outer Diameter | 11.7mm (Spiral: 8.7mm) | |
| Min. Bend Radius | 200mm | |
| Outer Sheath | Plastic Type (flame retardant) | |
| Sheath Color | Black | |
| Inner Spiral | High-Alloyed CrNi Spring-Steel | Galvanized Steel |
| Application | Welding Wire Steel (un-)coppered Cored Wire Steel in general Brazing Wire in general | Welding Wire Chrome-Nickel Cored Wire Chrome-Nickel |
| Marking color | white | yellow |
| Available lengths | Per meter / 30m roll | |
| Others | Cut to length markings per meter | |

FlexiGlide Wire Guidance Overview



FlexiGlide Wire Guidance Overview

| Pos. | Description | Part-Number | Picture | Note | Further Information |
|------------------------|--|-------------|---------|---|---|
| 1 | Wire Inlet Body for PF5 with Quick-Connector | 10-2-0-61 | | Wire Inlet Bodies for non-SKS Wire Feeder Units available on request | |
| 2 | Connection Nipple insulated for FlexiGlide with tension spring | 44-3-11 | | Optional use on wire drum side | |
| 3 | Wire Guidance FlexiGlide | 44-3-X | | | |
| 4 | Connection Nipple for FlexiGlide without tension spring | 44-3-4 | | Upon use on wire feeder side. Use of strain relief (P/N 14-10-6 or 14-10-7) is highly recommended | |
| 5 | Drum Connector with ceramic inlet | 44-40-1 | | | |
| Optional Parts: | | | | | |
| 6 | Suspension for FlexiGlide | 44-3-8 | | Can also be used as wall duct (Wire Guidance continuous from wire feeder to wire drum) | |
| 7 | Wall Duct for FlexiGlide | 44-3-9 | | Wire Guidance in 2 separate segments Additional needed parts for mounting: 2 pcs. Connection Nipple (P/N 44-3-4 or 44-3-11) | |
| 8 | Ferrit Sensor FS-1 | 93-7-2 | | Additional needed parts for mounting: 2 pcs. Wire Inlet Body (P/N 10-2-0-61) 2 pcs. Connection Nipple (P/N 44-3-4 or 44-3-11) | Wire Guidance DOC-0193DE DOC-0193EN |
| 9 | Wire End Sensor WES-01 for Wire Guidance | 44-50-1 | | Direct mount on Drum Connector P/N 44-40-1 | Wire Guidance DOC-0193DE DOC-0193EN |
| | Protective Cover for Wire End Sensor WES-01 | 44-50-2 | | | |

